



**GEOMETRIK**

FLOORING SOLUTIONS

VERSION 3 - 16-12-2021

# TATAMI

## TECHNICAL DATA SHEET



MARTIAL ARTS  
AND COMBAT



SELF-DEFENSE



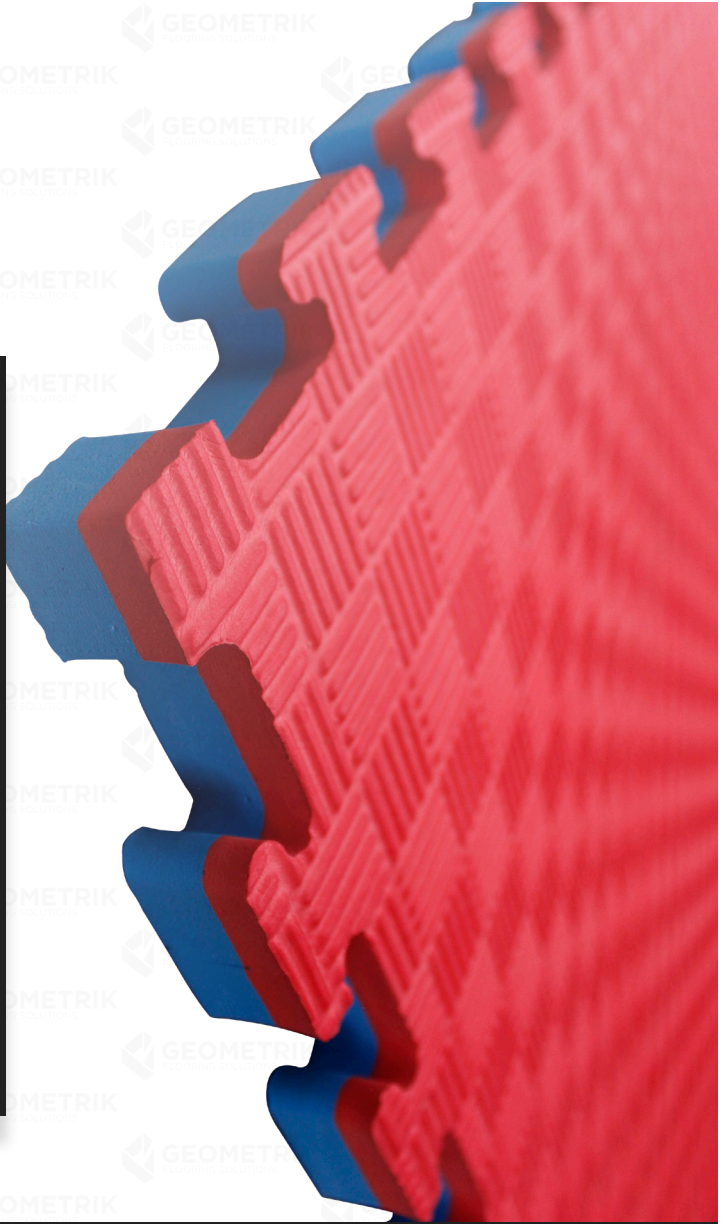
RELAXATION  
EXERCISES



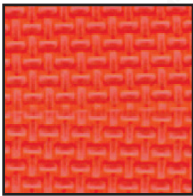
SCHOOLS AND  
KINDERGARTENS



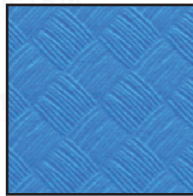
YOGA



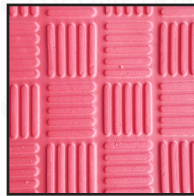
### FINISHING



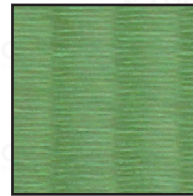
T



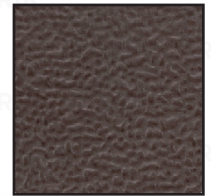
SQR



5S



TTM



STN

### DIMENSIONS AND TOLERANCES

Thickness (mm)	20mm	25mm	30mm	40mm
Dimensions	1000x1000 mm (1040x1040mm including borders)			
Tolerances	Length and Width $\pm 1,5\%$   Thickness $\pm 5\%$			

**Sede / Head Office:** Rua dos Carvalhais, nº 320,  
3885-033, Arada - Ovar

**Escritório / Office:** Zona Industrial do Roligo, Pav. 10,  
Rua 1º de Maio, nº 161-A  
4520-115, Santa Maria da Feira



[www.geometriktarget.com](http://www.geometriktarget.com)  
Tel: (+351) 256 333 180  
[info@geometriktarget.com](mailto:info@geometriktarget.com)

## MATERIAL

<b>Composition</b>	EVA (ethylene vinyl acetate) Foam
<b>Properties</b>	Waterproof   Recyclable   No Smell   Maximum Comfort   Shock absorbing   Double Sided   Ergonomic   Easy Installation   Easy Maintenance   Safe   Non-slip
<b>Density</b>	Approx. 80Kg/m <sup>3</sup> (+/-10%)
<b>Hardness</b>	Approx. 40°
<b>Conductivity</b>	Non-Conductive
<b>Hazards Identification</b>	It does not contain products classified as toxic and / or hazardous.
<b>Extinction and Decomposition</b>	All extinguishing ways allowed. There are no incompatibilities.
<b>Storage and Packaging</b>	Stackable. Keep away from living flames. Do not heat above 80 ° C. Allows packing with all materials.
<b>Toxicology and Ecology</b>	It presents no danger to man and the environment. Biologically inert. Recyclable.
<b>Cleaning</b>	Use a cloth moistened with water. Do not use corrosive products (ammonia, salum ...)

\* Its composition and appearance can change, maintaining its behavior and performance.

\* Tatami may show variations in the color tone.

\* It isn't advisable to wear shoes on the Tatami.

