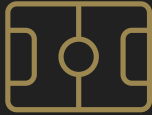


MULTIFLEX

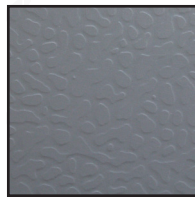
TECHNICAL DATA SHEET

COMMERCIAL
AREASGROUP
ACTIVITIES

SPORTS FACILITIES

OTHER APPLICATIONS

PHYSIOTHERAPY - EXHIBITIONS - COMMON SPACES

FINISHING

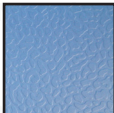

Embossed

DIMENSIONS AND TOLERANCES

Thickness (mm)	4,5mm
Length - Roll (m)	0,9m
Width - Roll (m)	15m
Tolerances	Length & Width $\pm 1,5\%$ Thickness $\pm 5\%$



MATERIAL

Composition	Synthetic PVC flooring
Properties	UV resistance Resistance to compressive strength and impact forces Abrasion resistance Comfortable Acoustic insulation Non-slip Anti-bacterial
Colors	  Blue Grey

SPECIFICATIONS

Weight	4,5mm: 3,75Kg/m ²	EN 430
Shock absorption	8mm: 39%	EN 14808
Skid resistance	97	EN 13036-4
Vertical ball behavior	90%	EN 12235
Vertical deformation	8mm: 1,3mm	EN 14809
Resistance to wear	642mg	EN ISO 5470
Resistance to indentation	0,37mm	EN 1516
Fire Behavior	Bfl	EN 13501
Evenness	<0,2mm	EN 13036
Resistance to a rolling load	0,4mm	EN 1569
PCP content	Does not contain PCP	
Density	590Kg/m ²	
Formaldehyde emissions	E1	EN 717

Note:

- Small ripples can be seen in the reflection of light.
- Its composition and appearance can change while maintaining its behaviour and performance.